

LED Lighting Kit


LED Control Box
(Included)

Power Cable
Slot

LED Strips
(Included)

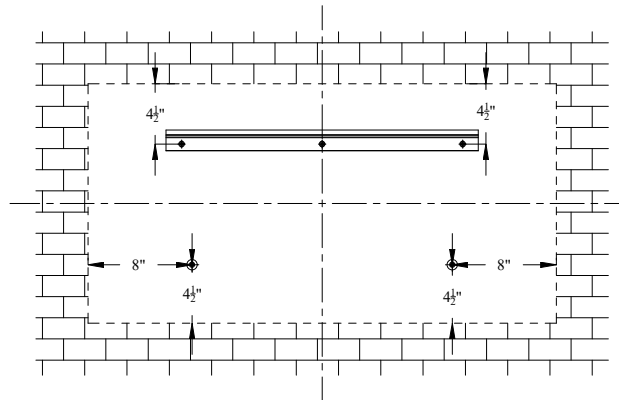
The LED strips are pre-installed on
the frame. Users are only required to
connect the corners and the LED
control box during assembly process.

If the user does not have an
available power supply
directly behind the screen, a
slot is available for the user
to feed the power cable
through the lower portion of
the frame.

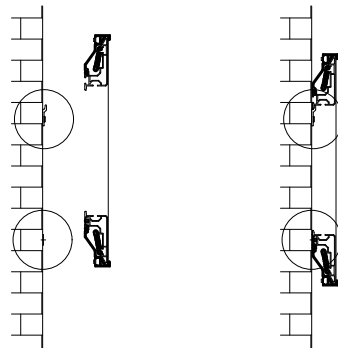
	
Title: Aurora Perforated NanoEdge LED Fixed Frame 100" 16:9	
Product model: EV-ZPL-100-1.25	
Not to Scale Not to Proportion	Page 2 of 3

Mounting Diagram

The holes used to mount the top bracket should be $4\frac{1}{2}"$ from the top of the screen frame.

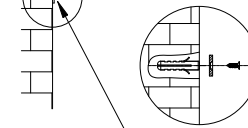
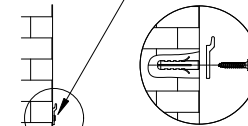


The holes used to mount the support magnets should be $4\frac{1}{2}"$ from the bottom and 8" from the sides of the screen frame.



Support magnets are designed for users to keep their screens completely parallel to the wall they are mounted on. It can also be used to make the screen vertical when the user's wall is not flat.

Mounting Brackets



Support Magnets



Title: Aurora Perforated NanoEdge LED Fixed Frame 100" 16:9

Product model: EV-ZPL-100-1.25

Not to Scale
Not to Proportion

Page 3 of 3