

To the owner

Thank you for purchasing our quality screen uses excellent matte white fabric and mechanical components to give you trouble free enjoyment for years. Please take a moment to read the user manual before installing and using to avoid trouble happened.

Please subject to actual product if appearance and craft update.

⚠ Safety Guide

1. When assembling, it is forbidden to stand underneath the screen to avoid any hazard. Expansive bolt should be firmly punched and fixed into the wall or ceiling.
2. Be sure the ground wire is connected with power cable effectively to avoid electric shock.
3. When using the laser pointer function on remote control, please be sure not to point to people directly to avoid any hurt.

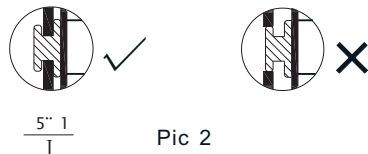
1. Assembling

The product is large engineering screen. In order to satisfy customers' different requirements, wall mounting (Pic1) and ceiling mounting (Pic 3) are optional.

Please open the carton and check accessories according to the list.



Pic 1



Pic 2



Pic 3

⚠ Note

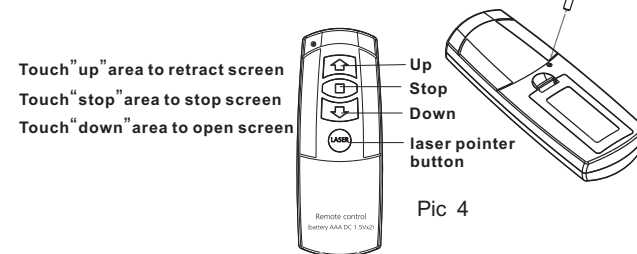
Please keep the screen casing and assembling plates in horizontal direction and install firmly (Pic 2).

2. Adjustment and usage

① The Use of Handset

Handset has been finished code learning before leaving factory. Please learn the code again if it doesn't work. The method to learn code is as following:

Remote control learn code: press "up" and "stop" button for 3 seconds synchronously, instruction light will slowly shining, then press the learning hole on the back of handset for one time, instruction light becomes bright, so the learn code for remote control is finished.



Pic 4

Delete way: Press "up" and "stop" button of LCD wall touch panel for 7 seconds synchronously, instruction light transforms from slowly shining to quickly sparkling, then no need to press, after that press "up" and "stop" button of LCD wall touch panel again, the instruction light becomes in normal bright state, so we finish to delete.

② Adjusting for fabric position (Pic 5)

When screen is not in the proper position, we need to adjust the screen position, adjusting methods are as following:

A. Adjusting for up limited position

When the fabric in the stage of drawing back and the bottom weight bar is not in the right place, please insert the adjusting stick into "A" hole, adjusting steps are as following:

- a. **Upward adjusting for weight bar position:** Rotate adjusting stick on "1" direction, then operate screen up and down by handset until the screen is in the right place.
- b. **Downward adjusting for weight bar position:** Rotate adjusting stick on "2" direction, then operate screen up and down by handset until the screen is in the right place.

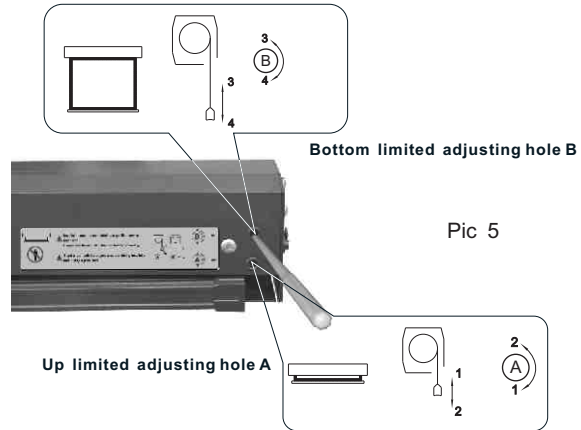
B. Adjusting for bottom limited position

When the fabric completely open up, while the top black border is not in right place, please insert the adjusting stick into "B" hole, adjusting steps are as following:

a. Increase the top black border(downward adjusting for weight bar): Rotate adjusting stick on "4" direction, then operate screen up and down by remote control until the top black border is in the right place.

Note: The top black border has adjusted to standard size in the manufacture process. Under the normal condition, there is no need to adjust it, the maximum adjustment range is 30mm.

b. Decrease the top black border(upward adjusting for weight bar): Rotate adjusting stick on "3" direction, then operate screen up and down by remote control until the top black border is in the right place.

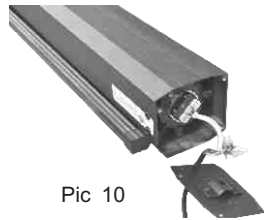


Pic 5

4. Maintenance

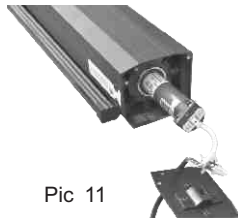
①. Motor Maintenance:

When replacing the motor or other problems occurred, do not need to take apart the whole screen, just take down the right cover plate, the step is as following:



Pic 10

As shown in the picture: loosen the nut and move the cover plate(Pic 11)



Pic 11

As shown in the picture: pull out the motor to maintain(Pic 12)

②.Screen care

Wet cleaning, with a soft towel moistened with water or weak alkaline detergent diluted liquid, don't use alcohol, ether and so on liquor to avoid screen surface deterioration.

Parts	Ash	Impurity
Casing	Rid the little dusty with feather duster	Clean with a mild soap solution, then dry with cotton cloth, take care to avoid casing scratching
Fabric	Clean the dusty with feather duster	Brush the dirty with cotton cloth

⚠ Remark:

1. Do not run the screen continuously over 4 minutes (The motor has anti-overheating function, you can operate again after 20 mins), please rerun it after cooling the motor down.
2. Do not scratch or fold up the fabric.
3. After usage, please check and confirm the cleanness of the screen before retracting the fabric into the casing.

Accessories

Name	Picture	Quantity
Expansive bolt		4
Assembling plate		2
Adjusting stick		1
Assembling hook		2